

swissôtel RESIDENCES  
BODRUM HILL







YOU *are* HOME.





*“The heavenly bliss of life in  
Bodrum is better than any eternal  
bliss that may await us.”*

CEVAT ŞAKİR KABAAĞAÇLI  
THE FISHERMAN OF HALICARNASSUS



# *Homer's land of eternal blue*

Where the Aegean meets the Mediterranean at the end of sweeping evergreen peninsulas lies Bodrum, a slice of paradise nestled along the Turkish Riviera.

Labeled as "the land of eternal of blue" by the renowned Greek poet and historian Homer, this vibrant destination beloved for its crystal-clear waters, exquisite beaches and coves, verdant hills, and picturesque villages, mixed with historical charm and cultural heritage, has been a magnet for in-the-know travelers since antiquity. Legend has it that Marc Antony built an island off the coast in Bodrum as a gift for Cleopatra.

Yet, Bodrum is so much more than postcard-worthy landscapes and storied myths. Blessed with a balmy Mediterranean climate, this captivating coastal town offers an unparalleled living environment between the land and sea all year round, while boasting a thriving dining, shopping, arts and entertainment scene to rival the world's greatest cities.









# *360° views. 365 days a year.*

In the lively heart of Bodrum, on a spectacular hilltop site with stunning views of the Bodrum Castle and the surrounding picturesque bay that stretches out towards the Greek islands, Swissôtel Residences Bodrum Hill offers a variety of efficiently planned and designed private residences, delivering the same immersive experience that the Swissôtel brand is lauded for.

Ranging from 60 sq m to 290 sq m, the luxuriously appointed collection of residences vary from studio apartments to sprawling garden residences and magnificent penthouses, each with expansive views of the Bodrum skyline.

With five-star amenities and services provided by the adjoining Swissôtel, this is the pinnacle of luxury coastal living.





LOCATION

Swissôtel Residences Bodrum Hill is located in a prestigious enclave in Bodrum city center, within close proximity to the Bodrum Cruise Port and Milta Bodrum Marina. Milas Bodrum International Airport, which serves direct flights to 84 destinations in 41 countries, is only 30 minutes drive away.

TRANSPORTATION

- Milas Bodrum International Airport (33 km)
- Bodrum Cruise Port (3 km)
- Milta Bodrum Marina (3 km)
- Yalıkavak Marina (20 km)
- Turgutreis Marina (22 km)

HISTORICAL ATTRACTIONS

- The Mausoleum of Halicarnassus (2 km)
- Bodrum Castle (2,5 km)
- Bodrum Ancient Theater (3 km)
- Myndos Gate (3,5 km)
- Ancient City of Pedasa (4,4 km)

HOSPITALS

- Acibadem Bodrum Medical Center (1,5 km)
- Bodrum American Hospital (2 km)
- Bodrum State Hospital (2,5 km)
- Acibadem Bodrum Hospital (10 km)

PRIVATE SCHOOLS

- Bodrum Bahçeşehir College (5 km)
- Bodrum Marmara College (5,5 km)
- Doğa College Bodrum Campus (8,5 km)
- TED Bodrum College (12 km)

GOLF CLUBS

- Bodrum Golf & Tennis Club (11 km)
- Regnum Golf & Country Club Bodrum (11 km)







## NEIGHBORHOOD

Swissôtel Residences Bodrum Hill invites you to live effortlessly between the sanctuary of your home and the vibrancy of Bodrum city center.





Swissôtel Residences Bodrum Hill sprawls across 36.300 sq m of scenic splendor. The development includes a 75-room Swissôtel and a collection of premium residences in various typologies.





## *Modern architecture meets ancient landscape*

With its fabulous hillside location overlooking the Bodrum coastline, Swissôtel Residences Bodrum Hill has a locally distinctive character that harmonizes with the land it occupies. Residential architecture combines modern design with natural elements to create spaces that are connected to the environment, while the use of premium materials sets a new standard for luxury living in Bodrum.









## *An oasis of serenity*

Surrounded by olive groves and pine trees with panoramic views over the Aegean sea, Swissôtel Residences Bodrum Hill is already steeped in natural beauty. The development's meticulously landscaped communal grounds and gardens feature a variety of plants and trees native to the region, adding to the serenity of the environment.





## *Safeguarding the nature and heritage of the place*



Bodrum is the land of imposing olive trees that have taken root in this ancient town thousands of years ago. The centuries-old perennial trees can even be found in the inner courtyard of the Bodrum Castle, providing a piece of paradise within the stone walls.

At the center of Swissôtel Residences Bodrum Hill's landscaped site, stands a 1200-year old olive tree - an imposing natural monument that has endured the test of time, deeply rooted in the rich soil of Bodrum, eternally surviving. While several hundreds of new trees are planted at the site, this mature olive tree with its large, gnarled trunk and twisted branches has been carefully preserved during construction. Standing tall as an ancient representation of life and knowledge, the olive tree evokes a sense of timeless beauty and calm.



## *With rooftop gardens, nature becomes part of the home*

At Swissôtel Residences Bodrum Hill, nature is not only a view to admire, but an integral part of the design concept and everyday life. The residences are designed with rooftop gardens, merging the environment with the architecture. While contributing to the project's environmental sustainability, these green areas create visually appealing lush environments on the rooftops. Moreover, they provide insulation and contribute to energy efficiency by reducing the need for heating and cooling in the residences.







*Thoughtfully designed  
interiors that blend  
warm minimalism with  
functionality*

Each residential unit is outfitted with radiant floor heating system, VRF air conditioning, fully-appointed kitchens, and smart home solutions.

The fully-furnished residences boast thoughtful layouts, premium materials and high-quality finishes. Equipped with state-of-the-art home appliances from cutting-edge industry brands, the residences offer turnkey luxury living in every corner. The attention to detail extends to all the furnishings, creating an elegant and relaxed atmosphere throughout the interiors.



## *Exclusive privileges and services*

Swissôtel Residences Bodrum Hill offers a privileged life with access to a world of top-tier facilities and services.

The development includes cafes, bars, and restaurants offering diverse dining experiences, along with an indoor and outdoor swimming pool, a full-service spa and sports club, a mini shopping mall, a cigar club, an art gallery, a workshop studio, a kids club as well as co-working spaces, conference and meeting rooms.

Swissôtel Residences Bodrum Hill residents also gain global privileges at Swissôtel destinations and benefit from the world-wide Swissôtel Rental System to rent out their property with ease when they are away.







## *RESIDENCES*



# THE STUDIOS

## Master

1 Bedroom  
Fully-furnished  
Dressing room  
Bathroom with double vanity, rain shower  
and standalone tub  
Kitchenette  
Private Terrace or Private Garden















Spacious, spa-inspired bathrooms combine minimalist design with premium materials and luxurious elements.

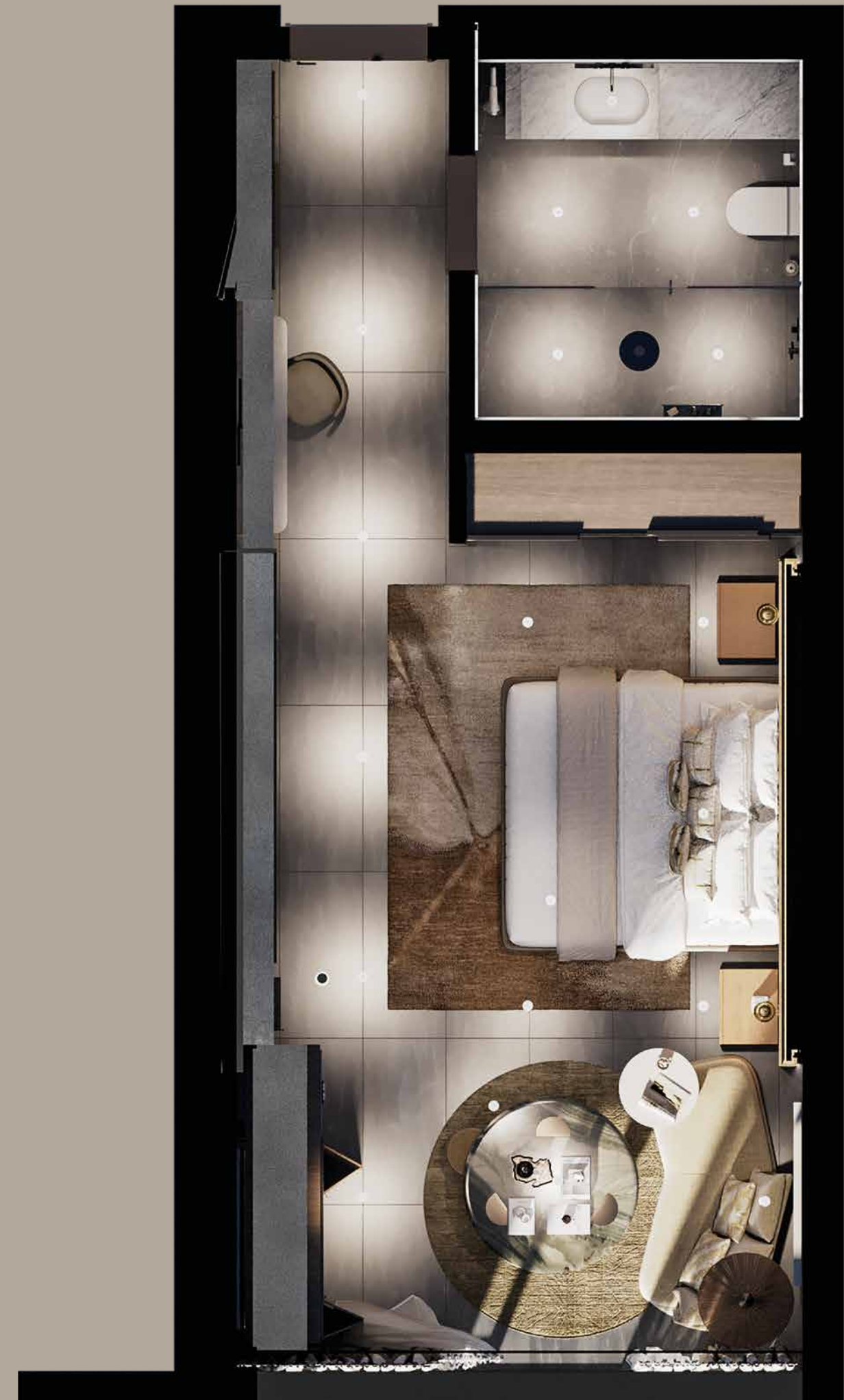


# THE STUDIOS

## Standard

1 Bedroom / 1 Bathroom  
Fully-furnished  
Kitchenette  
Private Terrace or Private Garden

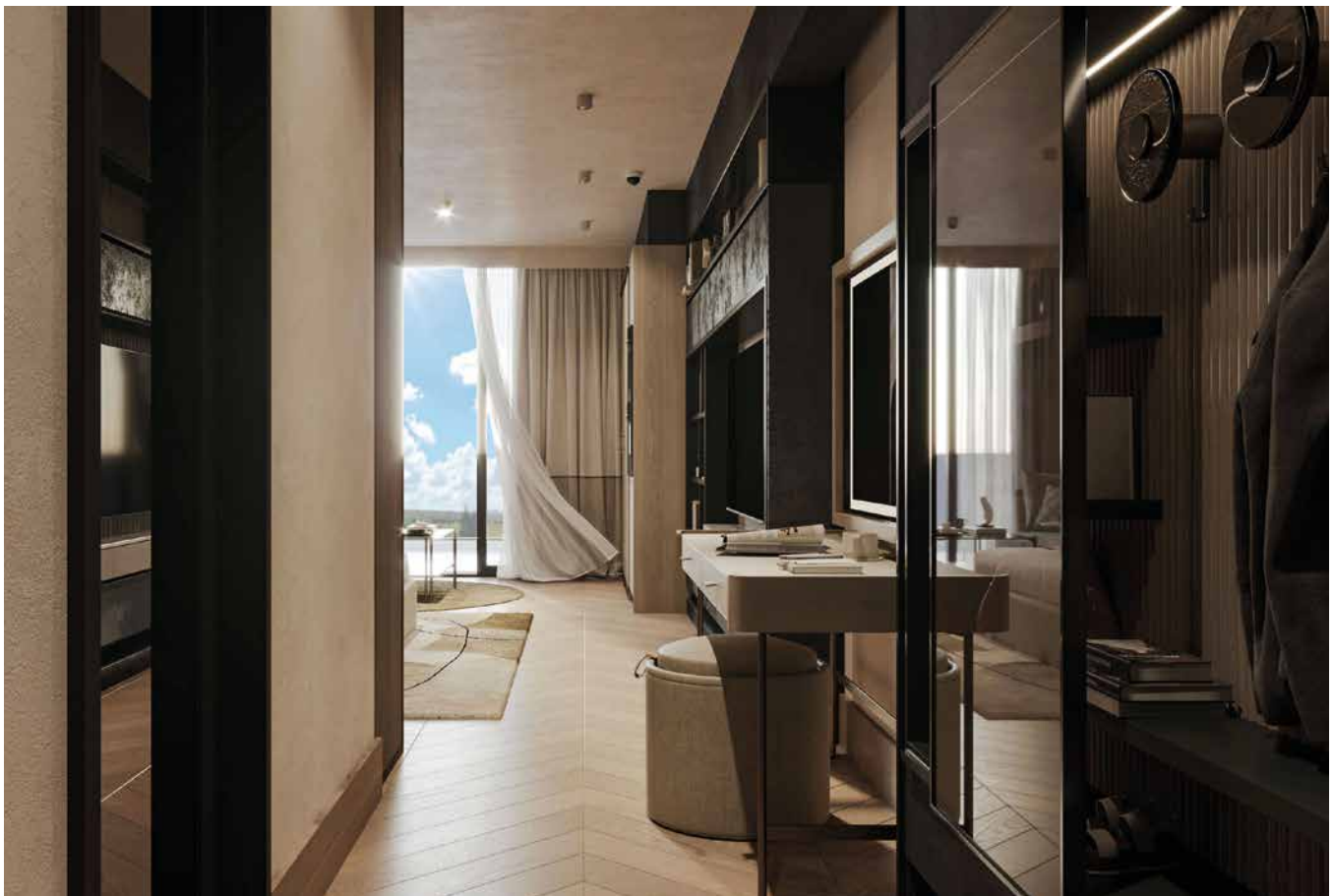
Swissôtel Residences Bodrum Hill features a range of spacious studios designed to the highest standards with a modern and luxurious feel. The Standard Room Studios consist of a living/sleeping area, a private bathroom, a kitchenette (ceramic hob, microwave, refrigerator, and coffee machine), and a private front terrace or garden.













# ONE-BEDROOM UNITS

1 Bedroom / 1 Bathroom  
Fully-furnished  
Fully-appointed Kitchen  
Washer / Dryer  
Private Terrace or Private Garden

The ingeniously spacious one-bedroom residences offer contemporary open-plan layouts allowing for a seamless flow between the kitchen, living, and dining areas. With well-thought-out proportions, a restrained material palette, and muted tones, the interiors exude an atmosphere of absolute comfort.













# TWO-BEDROOM UNITS

2 Bedrooms / 2 Bathrooms  
Fully-furnished  
Fully-appointed Kitchen  
Washer / Dryer  
Private Terrace or Private Garden

Two-bedroom units boast a spacious layout with generous ceiling heights and floor-to-ceiling glazing that open onto private terraces or gardens. The kitchen comes complete with a pantry cabinet and a spacious dining area. The bedrooms are large and luxurious, with well-appointed en-suite bathrooms.





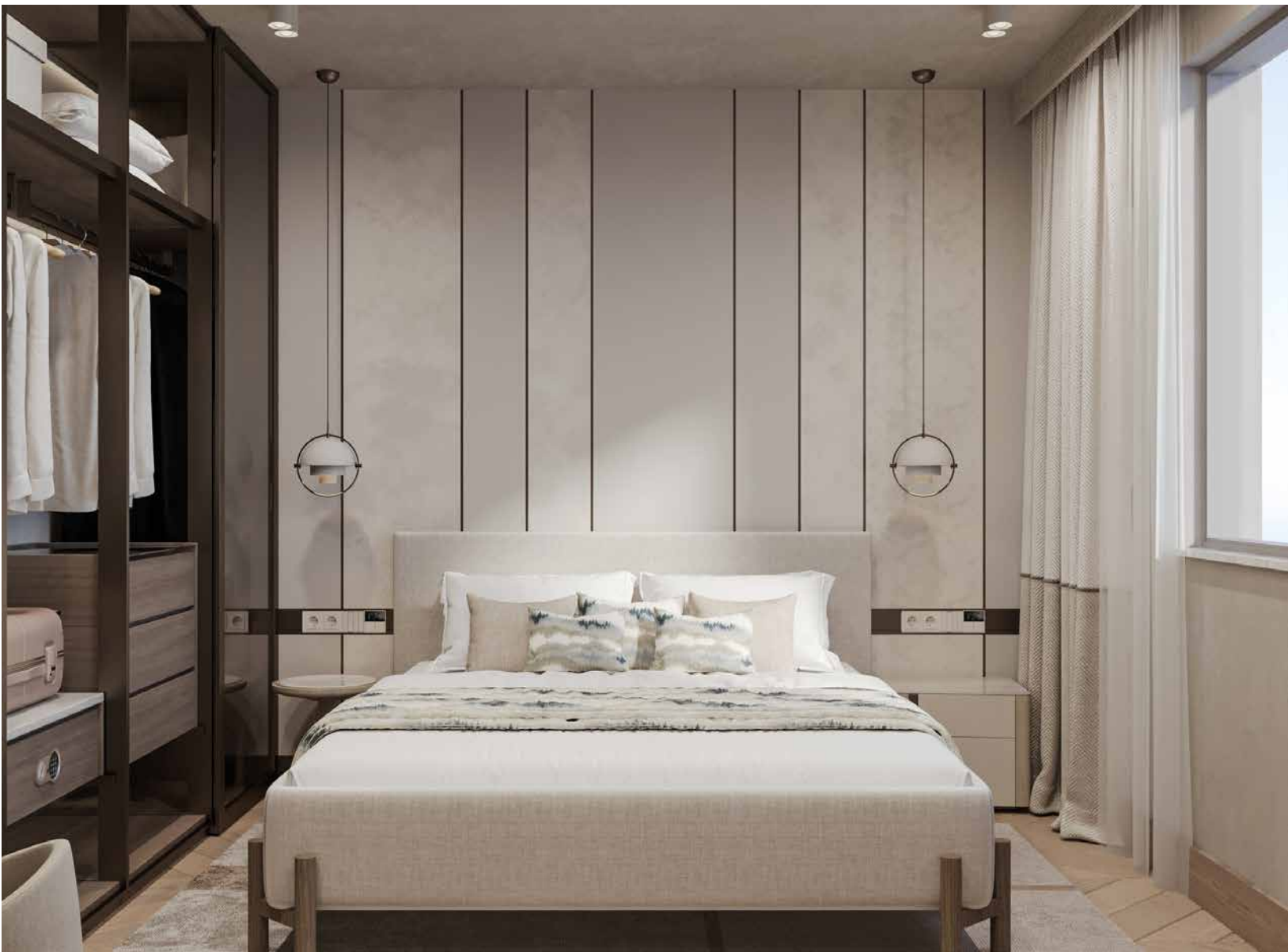






Two-bedroom units feature open-plan living, dining and kitchen layouts that ensure daylight floods into the spaces.





The selection of materials and furnishings enhance the aesthetic appeal while fostering a sense of comfort and relaxation in the bedrooms.





# THE PENTHOUSES

Swissôtel Residences Bodrum Hill includes a limited collection of seven expansive penthouses that provide the ultimate luxury living experience. Designed and detailed to the highest levels of quality by Italian architects, each penthouse has unique features that exceed expectations and is offered optionally furnished or unfurnished.

Ranging from 270 sq m to 750 sq m in three to five-bedroom configurations, the penthouses deliver an unparalleled level of space and comfort.

Each with its own private entrance, the penthouses feature soaring high ceilings with floor-to-ceiling windows that provide panoramic views of the Bodrum coastline, along with high-end amenities including a private indoor swimming pool, Turkish bath, sauna and spa.









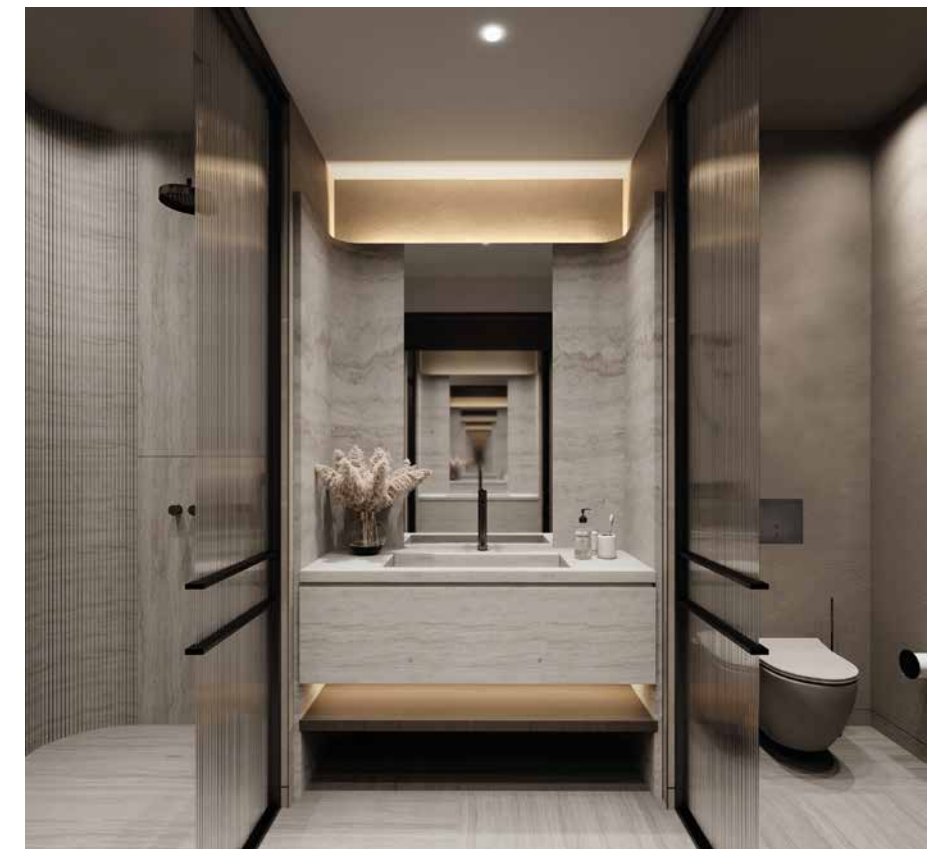


From luxurious countertops and cabinetry to high-end appliances, every element is carefully chosen to enhance the overall look and feel of the kitchens.





The master bedroom, complete with a walk-in wardrobe and private en-suite bathroom, makes for a serene retreat with a focus on simplicity, functionality and tranquility.















HILL Investment is an investment company delivering distinguished real estate developments in Turkey, with a prominent presence in Bodrum, and offering tailored solutions for both institutional and individual qualified investors. Serving as a reliable partner, the company connects investors with prestigious projects that provide high rental income and steady value increase.

Working with a team of experts, HILL Investment has a strong track record in developing innovative and timeless real estate projects, along with fund-based investments and timeshares.

HILL was established in partnership with the ERKA Group with more than 35 years of experience in the tourism and construction sectors; ADA Metal Demir Çelik Geri Dönüşüm, which has been active in the manufacturing industry since the 1970s; and Bosfora Partners, specialised in real estate developments since 1996.

HILL crafts projects with a clear vision backed by its ability to foresee future needs and in-depth understanding of changing lifestyles. The company has carved out a niche for itself in the sector with projects that reflect an unwavering commitment to excellence in every detail, while creating economic, cultural and environmental impact.

Today, HILL maintains a strong industry position with its team of experts and a diverse portfolio of premium properties that includes luxury residences and five-star hotels as well as boutique hotels, art galleries, office developments and adaptive reuse of historic buildings.





This catalog is for promotional purposes only. Hill Yatırım Turizm Gayrimenkul Tic. A.Ş. reserves the right to make any changes. In the event of any discrepancy between the apartment sizes and the list of areas, the information in the implementation project and the contract shall prevail

Printed Date: 2025

[www.hillinvestment.com.tr](http://www.hillinvestment.com.tr)

HILL YATIRIM TURİZM GAYRİMENKUL TİC. A. Ş.  
Yokuşbaşı Mah. 1836 Sok., No: 7A, Bodrum Muğla

[info@hillyatirim.com](mailto:info@hillyatirim.com)

0533 648 79 47



